



**7th National Early Childhood
Intervention Conference**
• Child • Family • Community

<http://www.necicmalaysia.org>necic2018@gmail.comwww.necicmalaysia.org

Engaging local community to make the rights to inclusion real

Presented by
Pauline Wong
Email add: paulinewong@malaysiancare.org



SINCE 1979
serving & partnering with the poor & needy

Community definition...

Paul Spicker (1995) defined community as:

‘a **group of people** linked by common characteristics or **culture**; a group of people linked through **social relationships**, people living in a confined **geographical** area; people who share a set of **common interests**.’



SINCE 1979
serving & partnering with the poor & needy

Community definition...

George Hillary (1955) viewpoints of community definition was...

‘at the core function and existence of community is **PEOPLE**. How **people act and engage** with one another defines both the **type of community**, how **strong** and how **effective** that community is.’



SINCE 1979
serving & partnering with the poor & needy

1

Disability is both a cause and consequence of poverty

2

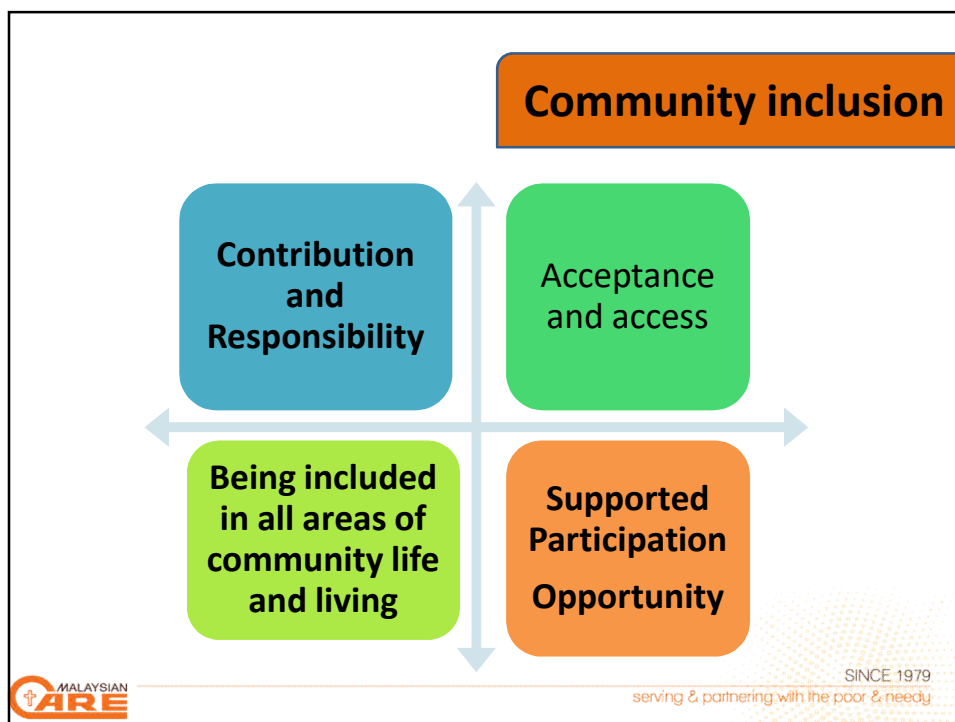
About 80% of the world's population of people with disability live in low income countries & experience social and economic disadvantages and denial of rights.

3

Most of the developmental initiatives ignore the NEED of people with disability in the community

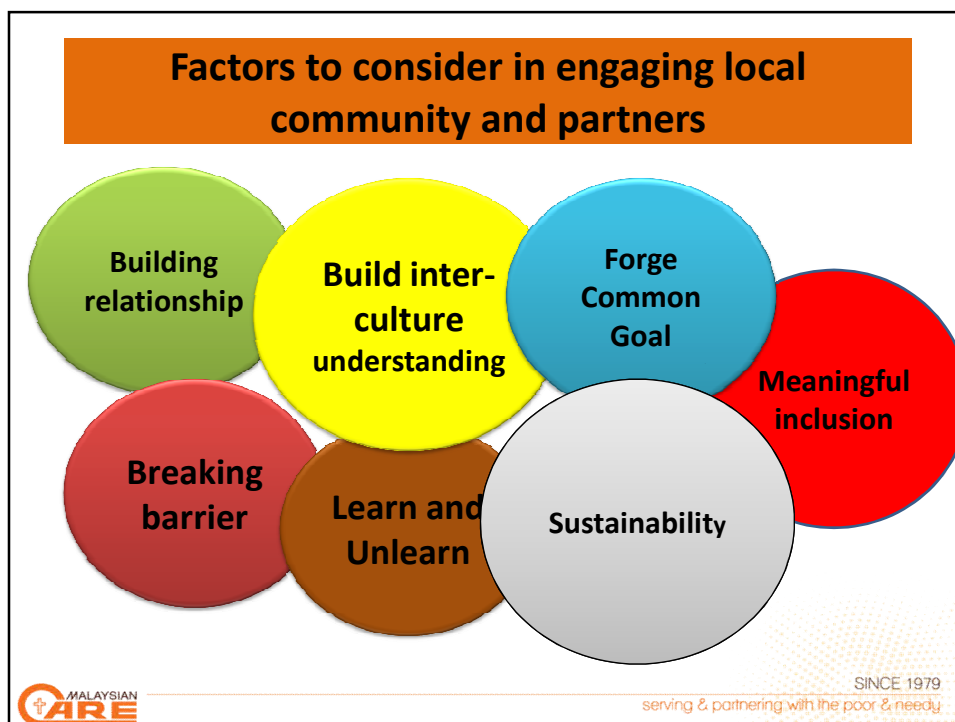
World Report on Disability and Rehabilitation

4



What we want to see...

Local community is **empowered** to remove barriers for people with disabilities and their families, and **play an active role** in facilitating the **inclusion** of people with disabilities and their families in **community activities**.



Three Cups of Tea
2006, Greg Mortenson & David Oliver
Relin

**“The *first time* you share tea with a Balti,
you are a stranger.
The *second time* you take tea,
you are an honored guest.
The *third time* you share a cup of tea,
you become family, and for our family,
we are prepared to do anything, even die.”**

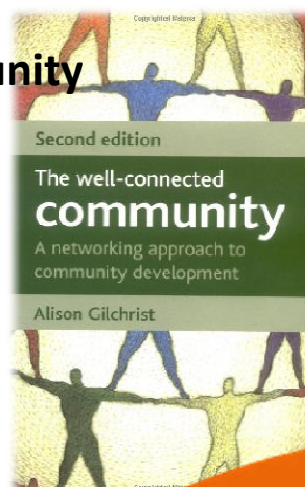
Haji Ali

The book cover for 'Three Cups of Tea' shows three young girls in white headscarves sitting together, looking down at something in their hands. The title 'Three Cups of Tea' is written in a decorative font at the top. Below the title, there is a quote: 'One Man's Mission to Promote Peace... One School at a Time'. The authors' names, Greg Mortenson and David Oliver, are at the bottom.

The Well-Connected Community

2009, Alison Gilchrist

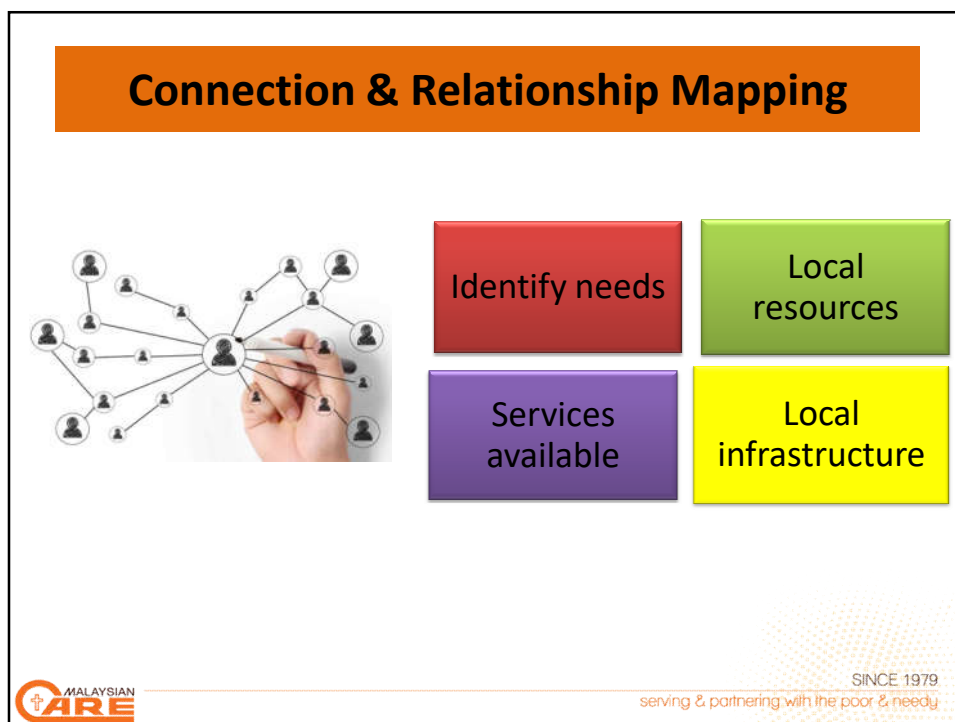
The concept of collective efficacy has been developed as a way of explaining the shared belief that working together people can change their situations and challenge injustice.



**Relationship = respect, inclusiveness,
participation, well-being**

Process





Create a Culture of Collaboration

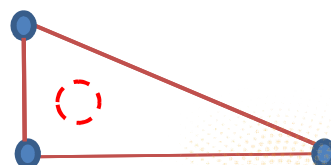
One person...Can make a point



Two persons...Can draw a line



Three persons...Can create a space



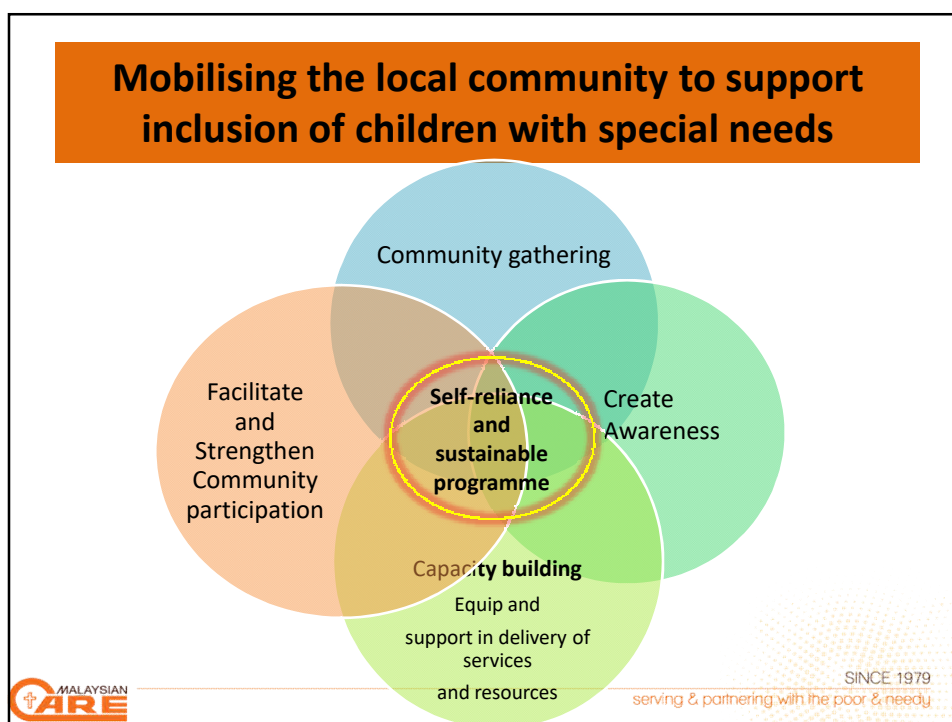
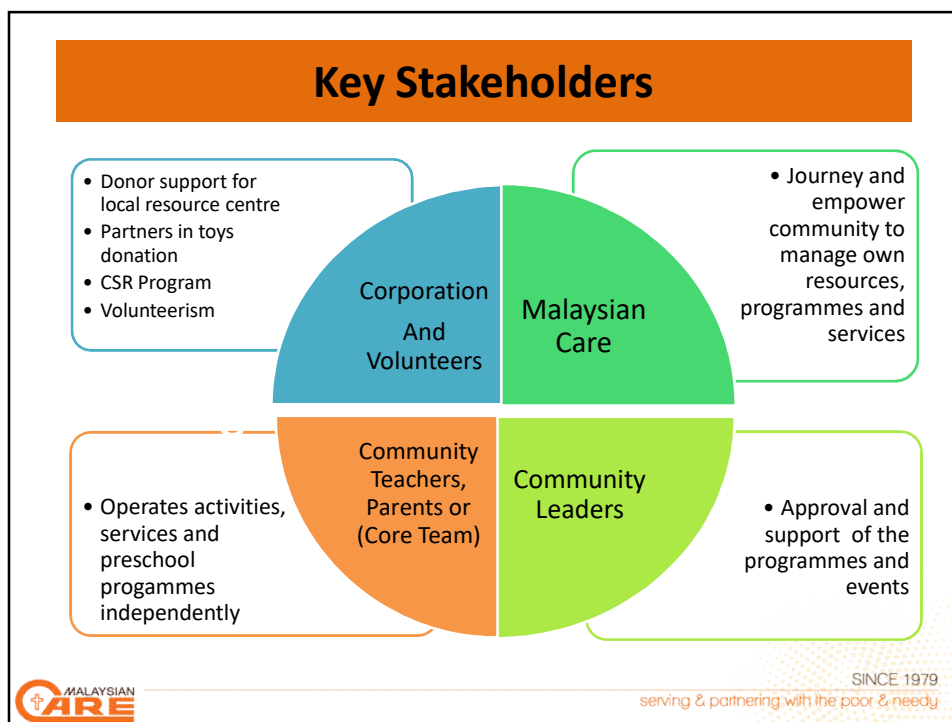
SINCE 1979
serving & partnering with the poor & needy

Partnership the Key Stakeholders: (local community and local partners)

Community Engagement & Collaboration



SINCE 1979
serving & partnering with the poor & needy



Ideas to engage community and partners



Bumblebee- Mobile Toy Library

World Play Day



Inclusive Preschool Project




SINCE 1979
serving & partnering with the poor & needy

Community gathering



SINCE 1979
serving & partnering with the poor & needy

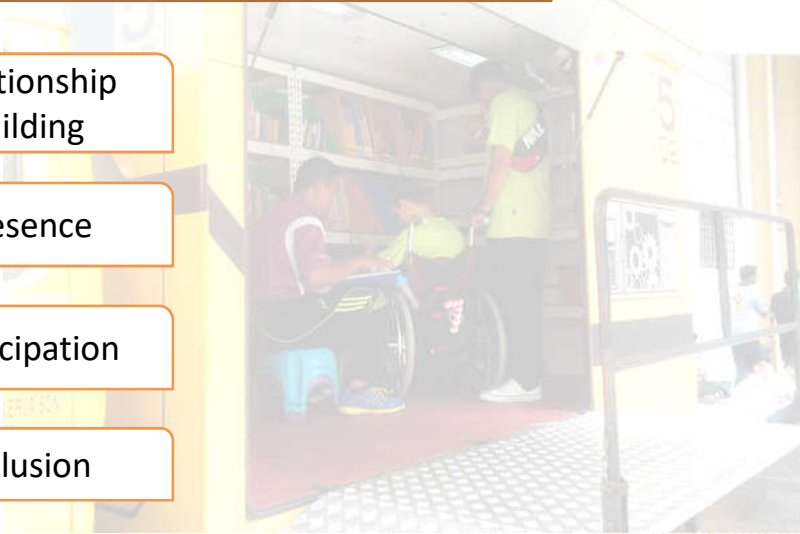
Mobile Toy Library




SINCE 1979
serving & partnering with the poor & needy

Bumblebee – Mobile Toy Library

- Relationship Building
- Presence
- Participation
- Inclusion



SINCE 1979
serving & partnering with the poor & needy

Create Awareness



Create Disability Awareness talk organised by the key person in the community, partner with Malaysian Care and other stakeholders e.g. Government / NGO



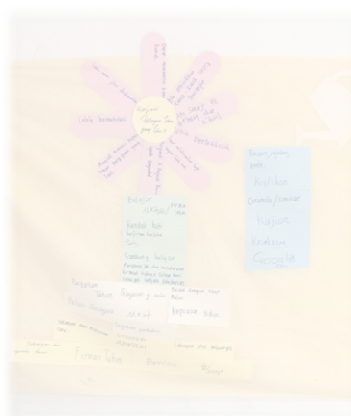
SINCE 1979
serving & partnering with the poor & needy

Community -Capacity Skills Building



SINCE 1979
serving & partnering with the poor & needy

Community Participation



SINCE 1979
serving & partnering with the poor & needy

Bumblebee – Mobile Toy Library

- Low Cost Flats
- Squatters
- Villages
- Schools

Urban setting



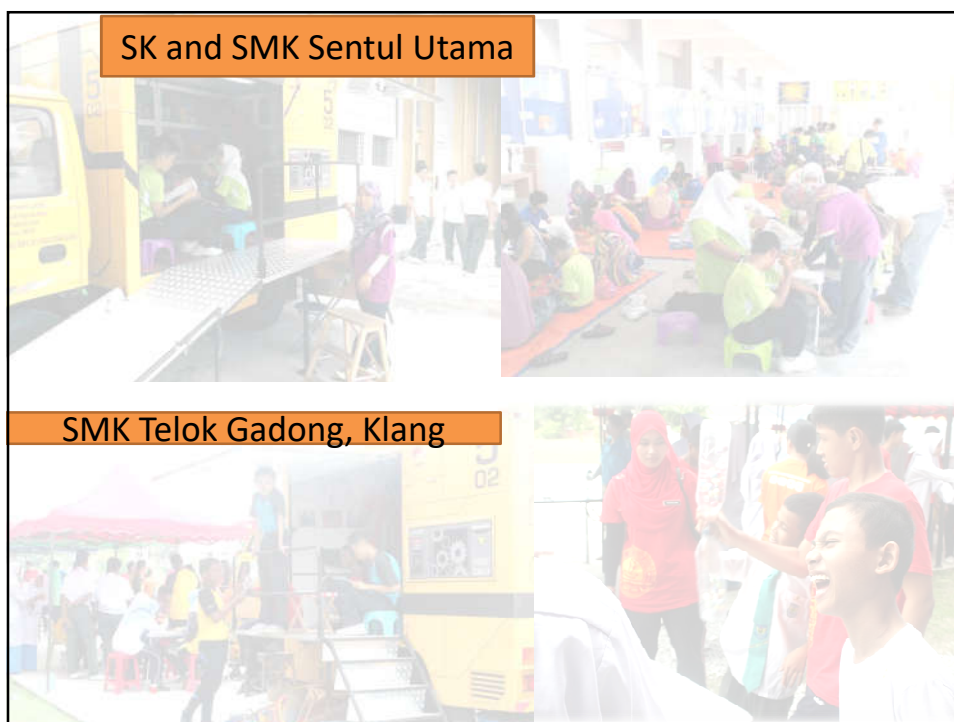
- Learn through Play
- Connecting with the community
- Inclusion
- Have Fun

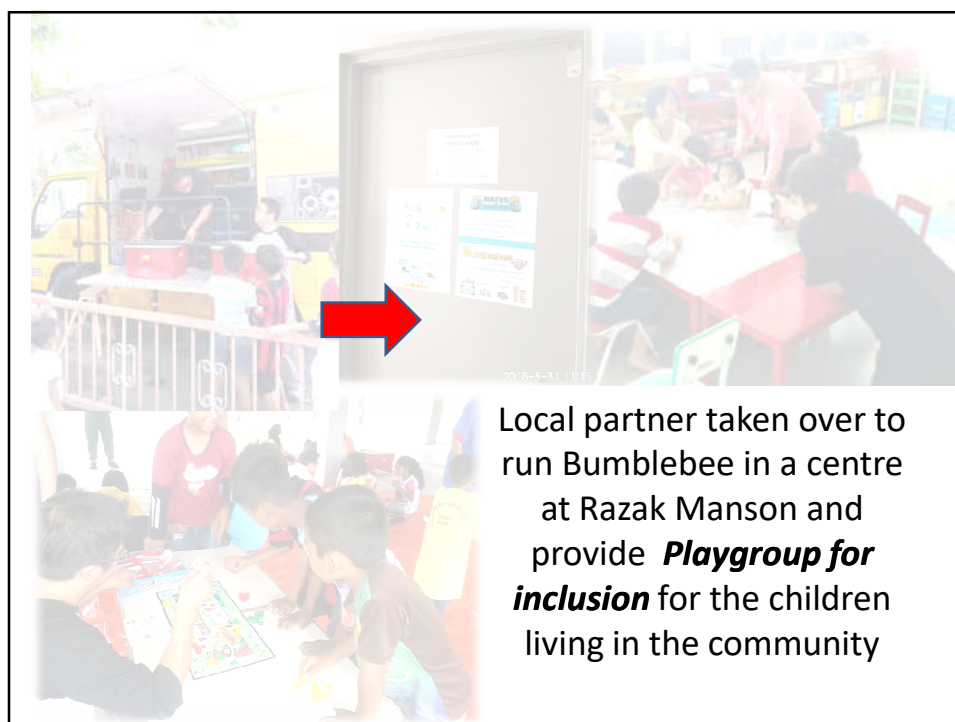
To the community



Rural setting







World Play Day 2018



WORLD PLAY DAY
9 Jun 2018
Kota Marudu

More than 300 families, teachers from different communities and 500 children participated included children with special needs

Community Participation with key partners

- Local Ketua Kampung
- Local Preschools
- Unicef
- Other NGO



More than 300 residents attended
About 260 children included children with special needs

Partner with the local community leader
Create Disability Awareness Talk



CARE MALAYSIAN
SINCE 1979
serving & partnering with the poor & needy

Model of *Community partnership* for inclusion in rural poor services

Family, Preschool and Community

- Family: 3 children (1 Child with Spinal Bifida, 2nd child – typical and 3rd child with Autism)
- Identify **one key person** in the community
- Connect with the preschool teachers
- Build relationship with the community
- Collaborate with the local preschool and community to assist this family
- Capacity Building – train the local preschool teacher to include children with special needs



CARE MALAYSIAN
SINCE 1979
serving & partnering with the poor & needy

Model *Community Support* for one family with 3 children with Cerebral Palsy in a rural poor area



SINCE 1979
serving & partnering with the poor & needy

Possible challenges in community mobilisation

- Not a straightforward process
- Need time - take years
- Skills to managing group dynamics
- Other issues



SINCE 1979
serving & partnering with the poor & needy

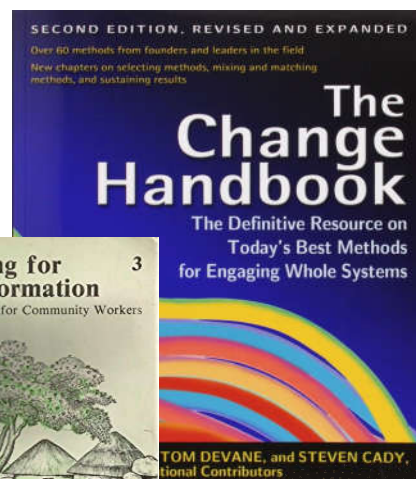
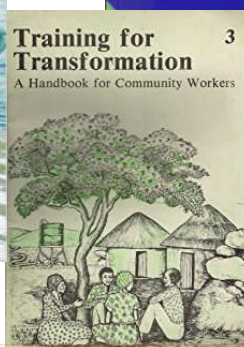
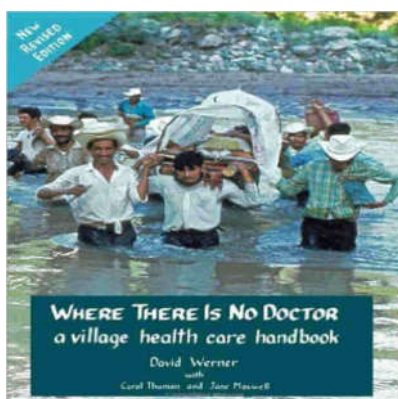
Outcome

- Share local knowledge and resources
- Local ownership
- Self-reliance among community members
- Trust and partnership
- Capacity building skills – address own issues
- Sustainable and last longer and bring long-term benefits to the community.



SINCE 1979
serving & partnering with the poor & needy

Reference manuals



SINCE 1979
serving & partnering with the poor & needy

